



From the Desk of Pastor Meyer

"True Love"

February 14 is Valentine's Day. Most of us know it as a day to show love through cards, candy, and karats given as gifts to the one whom we love. We usually associate Valentine's Day with Cupid and arrow-packing cherubs, chocolates and Hallmark cards. But did you know that Valentine's Day actually was named for St. Valentine and contains a deeply Christian heritage and history?

According to John Delaney's Dictionary of Saints, our most probable candidate for the day's namesake was a priest (named Valentine) in Rome around the time of Emperor Claudius II (late AD 200s). At that time, soldiers were considered unlovable. They were, at best, tolerated; at worst, considered to be monsters. Because of their vocation, they were not to be ministered to by the Church. Even though soldiers were ordered to not marry, legend says that Valentine would marry soldiers to the women they loved. Claudius II was a notorious persecutor of Christians and anyone who helped Christians was committing a crime. Valentine continued to serve publicly as a priest to anyone and everyone who needed his care – including soldiers. When the ecclesiastical hierarchy found out that he was breaking both civil and church law, Valentine was arrested and imprisonment. While he was in prison, he ministered to his jailer and the jailer's ill daughter. Tradition says that Valentine wrote a note on a ♀-shaped note to the sick girl. The note, delivered shortly before he was martyred on February 14, was signed simply, "Your Valentine."

For centuries, this simple symbol of affection lay buried in the annals of history. Geoffrey Chaucer, an English poet and author in the 1700s, discovered and resurrected the idea of giving a heart-shaped note to a loved one. With the Victorian and Romantic periods fully in swing, Chaucer's idea caught on quickly. With that, the modern Valentine was born, cementing its way into our February calendars and the modern \$17 billion dollar industry called Valentine's Day.

...Continued on page 10

FEBRUARY NEWSLETTER

Inside this issue:

LWML News	2 & 12
Memorials & Elections	7
Birthdays & Anniversaries	5
Calendar	15
Bulletin Board & Elder Assignments	3
Membership Changes & Sunday School	6
Worship Duties	14
Financial Report	4

Special points of interest:

- *Special Activity Groups on page 9*
- *Ash Wednesday on page 8*
- *Ground Hog Supper on page 13*
- *Consecration Sunday on page 12*

The special Commemorative postage stamps you have been sending in will go towards missions so keep them coming!!



Chancel Circle welcomes donations of living flowers and plants for the worship services. Let the church office (580) 234-6646 know the date you would like to provide them. Also, include the instructions after they are used for worship.

CIRCLE MEETINGS

Community Service Circle

February 3, 2026 at 7:00 PM
2018 Lantern Lane

Hostess: Kathy Wuerflein
Topic: Lorie Legere

Devotions: Veta Wheeler
Project: YWCA Crisis Center

Visiting Circle

February 4, 2026
12:30 PM in Room #108

Service Circle

February 4, 2026
1:00 PM

Hostess: Barbara Kroll Topic: Renie Krienke

Chancel Circle

February 12, 2026
6:00 PM

Hostess: Pam Wiederkehr
Altar Care: Pam Wiederkehr
Topic: Pam Wiederkehr

The General Meeting will be held on Monday, February 23, at 6:00 PM in the basement.



CELL PHONES, INK CARTRIDGES, COMMEMORATIVE STAMPS

LWML thanks you for helping us recycle these items. Currently, we only take HP and Canon ink cartridges. (You could put your cartridge in plastic baggie if it is leaking). The commemorative stamps go towards missions, so keep them coming too!

ST. PAUL'S LUTHERAN CHURCH



This page will be dedicated for our members who have their own business and would like to put the word out about it. If you are in the need of any type of service please check out this page first to see if there is a member that can provide the service to you. Let's join together to help support each other!

Jenny Smithson—Broker Associate

Lippard Reality

1102 W, Broadway Ave. Enid, OK, 73703

Cell: 580-747-6225

Call me for all your real estate needs!

Your Realtor in the Beginning—Your Friend in the End

“Enid Dental Care”

Stephanie Herbst, DDS

Dennis Morehart, DDS

2411 Heritage Trail #4

Enid, Oklahoma 73703

(580) 237-2213

“Give us a call if you are looking for a dental home!”

Elder assignments for this year are as follows:

Gene Hollrah	580-234-9586	Adasiak—Clark
Jonathan Becker	817-939-5190	Cole—Fisher
Ricky Lunday	580-603-0814	Fleischmann—Hoeltzel
Don Nobis	580-747-2267	Holland—Lieswald
Ron Young	580-532-4483	Light—Nolte
Paul Dunbar	580-233-6063	Otipoby—Smithson
Gene Breitenkamp	580-541-9323	Snowden—Zoch

Please contact your elder if there is anything he could do to help serve you.



LUTHERAN CHURCH EXTENSION FUND

Interest rates for February are now out. Call "Dial-a-Rate" at 1-800-THE LCEF



2026 Offering Envelopes & 2025 Financial Statements

Are still available but they have been moved to the office. Please contact Crystal if you need assistance.

FINANCIAL REPORT AS OF December 31st

Offering Goal for 25-26:	\$524,000
Offering to Date:	\$283,976
Income + Offering Goal 25-26:	\$775,800
Income to Date:	\$876,141
Expense Budget for 25-26:	\$1,279,743
Year to Date—Expenses:	\$666,964

Net Income to Date: \$209,177



Choice Dollars!

Be sure to direct your Thrivent Choice Dollars before the March 31st deadline! If you need assistance, feel free to contact Ralph Kroll at (580) 747-3728 or your Thrivent representative.



Financial Professional Bob Morgenthaler is the Thrivent representative for Enid. He is available for questions or concerns you have on your insurance and investments products. Bob has been with Thrivent for 21 years. The office is located at 201 N Grand Ave, on the Northeast corner of Randolph and Grand. The office is Suite #510. Please call ahead to schedule appointments at 918-406-7029. You may also email at bob.morgenthaler@thrivent.com.

THRIVENT IS THE MARKETING NAME FOR THRIVENT FINANCIAL FOR LUTHERANS. Insurance products issued by Thrivent. Not available in all states. Securities and investment advisory services offered through Thrivent Investment Management Inc., a registered investment adviser, member FINRA and SIPC, and a subsidiary of Thrivent. Licensed agent/producer of Thrivent. Registered representative of Thrivent Investment Management, Inc. Advisory services available through investment adviser representatives only. Thrivent.com/disclosures. 2733677-091719

You may now give tithes and offerings online through our website:

Just visit: www.stpaulsenid.com and select online giving on the home page.

You can also text **SPLC** (888) 444-8774.

You can also scan:





FEBRUARY BIRTHDAYS



birthday
wishes
to...

- 1 - Theresa Newberg
- 5 - Hans Wuerflein
- 6 - Dian Salisbury
- 7 - Hayden Durheim
Tessa Fleischmann
Blake Gabriel
- 9 - Donna Powell
- 11 - Gage Biggers
- 12 - Joan Bauer
Ken Fischaber
Donald Nobis

- 13 - Cheryl Clark
Sharyn Mueller
- 14 - David Braley
Phil Sutter
- 17 - John Hoeltzel
- 18 - Marilyn Simpson
- 19 - Linda Decker
- 20 - Ruth Dorsch
Rhonda Lamle
- 22 - Logan Durheim
Mike Koehn
- 26 - Savannah Dryden
- 27 - Jere Courter
- 28 - Jonathan
Breitenkamp
- 29 - Sue Deterding



Happy
Anniversary

- 3 - John & Amanda Fuxa
- 5 - Gene & Christine Hollrah
- 14 - Brad & Katie Hedges
- 17 - Melvin & Crystal
Kingcade
- 24 - Joe & Dena Felton



**THE FOLLOWING ARE CHANGES
MADE TO THE DIRECTORY SINCE
THE PRINTING OF THE
JANUARY NEWSLETTER**

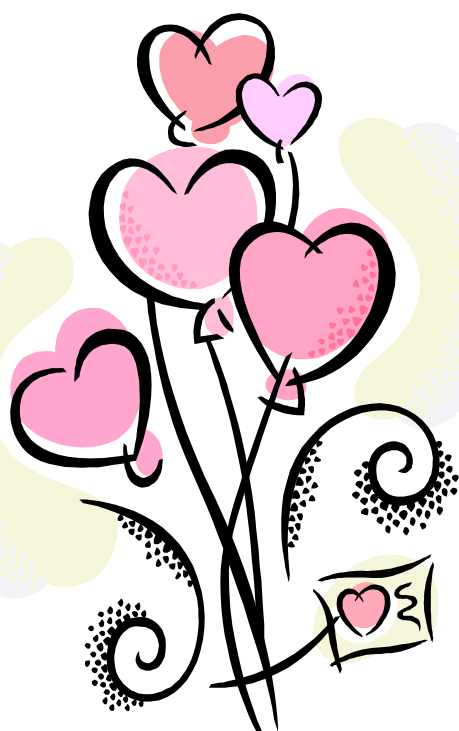
**Mason & Jennifer
Gritman Family**
3306 Cervantes
Dodge City, KS 67801



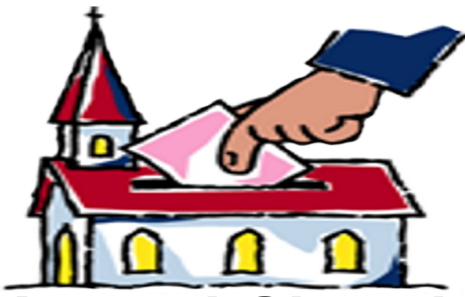
If you haven't given the
Church Office your
E-Mail address yet call or
send it to:

office@stpaulsenid.com

We send out prayer
requests, hospital news
and reminders of special
events.



Join us during our Sunday School
hour at 10:15 am. We have a class
for age 3 through grade 12 that
meets in the library. We have an
adult class that meets in the church
basement.



Annual Church ELECTIONS

year: **Chairman-elect, Treasurer, Head Elder, two members at large, School Board Chairman & Properties Chairman.** The responsibilities for each office may be found in the church constitution. Of course, if you are currently in a position, and have not already served two terms, you are eligible to run again. May God bless you and lead you as you consider where you may serve.

Church Election Time Fast Approaching: As we near the end of the church year, it is once again time for us to reflect back on the past year and to look ahead to coming opportunities. In Mark 10:45 we hear Jesus speaking: “⁴⁵ For even the Son of Man came not to be served but to serve, and to give his life as a ransom for many.” (Mark 10:45 ESV) You are invited to take time and see where you, in the Spirit of Jesus Christ, might be able to serve St. Paul’s congregation and the surrounding community. The following offices will be up for election this

Men’s Bible Study Breakfast

Meet at Boomerang — located at 721 S. Oakwood Rd.— at 7:00 AM each Friday



In memory of BoDean Free —

Memorials were made to **St. Paul’s Lutheran Church** by Randall & Martha Gabriel.

In memory of Mona Webb—

Memorials were given to **St. Paul’s Lutheran Church** by Randall & Martha Gabriel, Pat Dresser, Mike & Renie Krienke & Linda Lohse.

Memorials were made to **St. Paul’s School Library** by Stacie Dunn.

Memorials were made to **Build to the Future** by Gene & Christine Hollrah.



We will live-stream the church services during the month of February at:

<https://stpaulsenid.com/church-media/#LIVESTREAM>

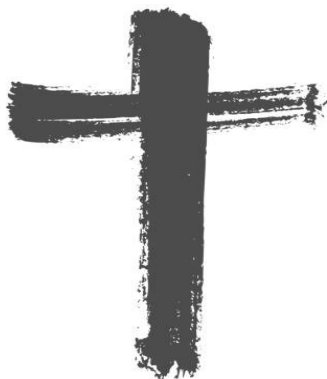
If you cannot watch these videos live, they are recorded and you can watch them at your convenience.



Ash Wednesday communion worship will be held on February 18, 2026, at 6:30 PM and will include the imposition of ashes.

A light meal will be served at 5:00 PM, by donation. Proceeds will be used towards Build to the Future.

Ashes will also be administered during chapel at 9:00 AM. You are welcome to join us.



We would like to welcome you to the February family movie night on February 22!

**5:00 PM in the church basement.
Free Popcorn one and all!**



**February Dine Out
Pizza Inn
February 16th!**

Ladies Bible Study

February 3rd Session 2
February 10th Session 3
February 17th OFF
February 24th Session 4



Pinochle will meet on the first and third Tuesday of each month at 1:00 PM at the home of Gerald & Joyce Nolte.

3005 Forestridge Place

volunteer with CHILDREN'S MINISTRY



Children's Ministry Team will meet on February 9th, at 1:00 PM.



Dominoes Group meets each 1st & 3rd Monday at 9:45 AM at the home of Gerald & Joyce Nolte.

3005 Forestridge Place



Balance & Strength Exercise meets every Tuesday & Thursday at 11:00 AM in Room #108.



Senior Adults Ministry Potluck Luncheon will be held on the fourth Wednesday of each month at 11:30 AM. The location for January will be announced at a later time.



...Continued from page 1

Whatever you give your loved one – whether it's a hand-made card or an exquisite piece of Charming Charlie's finest; whether a gas-station rose or Jarrod's newest design – you carry on the tradition begun almost 2000 years ago by a little-known priest who dared to show compassion to those who were considered by others to be unlovable.

This year, Valentine's Day falls four days before Ash Wednesday, February 18th. Ash Wednesday begins the season of Lent, the six weeks prior to Easter. During the season of Lent, the church marches to a more somber tune as we reflect on Jesus' suffering and death for us. With contemplation, prayer, meditation on Scripture, and personal reflection we focus particularly on the cross of Christ and what that means for us.

*If my sins give me alarm and my conscience grieve me,
Let Your cross my fear disarm; peace of conscience give me.
Help me see forgiveness won by Your holy passion.
If for me He slays His Son, God must have compassion! (LSB 440)*

Here is the greatest symbol of love that the world has ever seen: the cross of Jesus. It was the heart of Jesus, filled with compassion for sinners, that caused Jesus to take our place. It was the heart of Jesus, moved with sorrow at what the world had become, that caused Jesus to be willing to rescue the world from itself with His death. It was the heart of Jesus, overflowing with love, that allowed Jesus to give Himself for the unlovable – including you and me.

The cross is proof positive of Jesus' will and words: Yes, I love you.

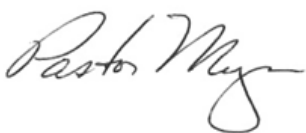
If the devil ever tempt you to think that, for some reason, God doesn't love you, look to the cross: Jesus loves you. If your conscience ever tries to guilt you back into what has already been forgiven, look to the cross: Jesus loves you. If you ever wonder if your baptism really made you a child of God, washing away your sins, look to the cross: Jesus loves you.

On Valentine's Day, you will see and hear about all of the great signs and symbols of love. You may receive some; you may give others. Well and good – all of them – for they are symbols of someone's love for you and your love for them.

But if you want to see true love, look to the cross. "This is love: not that we loved God, but that He loved us and sent His Son as an atoning sacrifice for our sins" (1 John 4:10).

This year, we'll focus on the theme of God's Gift of Forgiveness for our midweek Lenten series. It begins Ash Wednesday, February 18, culminating with the Holy Triduum of Maundy Thursday and Good Friday (April 2 and 3) and the celebration of the resurrection of Jesus on Sunday, April 5. The evening midweek services are at 6:30pm.

God fill your love for others with His love of you,



FREE DENTAL CARE!



The Oklahoma Mission of Mercy (OkMOM) is a free, two-day dental clinic event that provides donated dental care to people of all ages who are uninsured, underinsured, or otherwise don't have access to dental care. The clinic covers a range of basic and critical dental treatments including cleanings, extractions, fillings, and some partials and root canals.

February 6 & 7, 2026

Stride Bank Center
301 S Independence Ave
Enid, OK 73701

Doors open at 5:30am each day.

Event Details

- All ages may be treated. Children under 18 must be accompanied by a legal guardian.
- **No ID required.**
- No appointments. **Patients will be seen on a first-come, first-served basis.**
- No financial eligibility criteria or insurance required.
- BE READY TO WAIT. Expect to spend most or all of your day with us, up to 10 hrs. Please bring any needed medications, diapers, bottles, food, water and snacks.

PATIENTS RECEIVING TREATMENT MUST MEET THESE REQUIREMENTS:

- Blood pressure levels under 180/100
- Blood sugar levels under 300
- No fever/illness at the time of the event

VETERANS

may pre-register on site
Thursday, Feb. 5
at 3:00pm



More information available at okmom.org



OkMOM is organized by the Oklahoma Dental Association and the Oklahoma Dental Foundation with help from the State of Oklahoma and other generous sponsors. Questions? Email us at okmom@okda.org

Consecration Sunday

Our God has blessed us with more gifts and blessings than we know. Now it is time to show Him how much we appreciate them. February 15th will be CONSECRATION SUNDAY. There will be cards available for "each" of our members to "pledge" their TIME and TALENTS. The cards will also request EACH FAMILY to pledge their TREASURES. Only one pledge of treasures per family is requested and is in addition to any pledges to the Capital Campaign. Please take a card home, prayerfully consider your God given gifts and blessings, and return the card to Worship Services on Sunday, February 22nd. A list of time & talents will be shared with the church council to be used when projects need to be done around our church and school. For those pledging online, there will be columns designated for time & talents.



Finding Peace



"Peace I leave with you, My peace I give to you ..." John 14:27

Save the Date

59th Convention

Lutheran Women in Mission

Oklahoma District LWML

April 17-18, 2026

Hilton Garden Inn, Edmond

Finding peace in today's world can be difficult. Join us as we explore how Jesus helps us find this peace.

Keynote Speaker: LCMS OK District Pres. Rev. David Nehrenz

Bible Study Leader: Michelle Dierks, Author

Hosted by Kingfisher and Panhandle Zones

Reception for Ruth Dorsch

A Come and Go Reception for Ruth Dorsch will be February 8 from 1-2pm at Zion Lutheran Church and Preschool in Fairmont. The reception honors Ruth for the 30th Anniversary of her service as a Teach/Director of Zion's Preschool. She began serving in January 1996 and plans to retire in May 2026.

JOIN US FOR OUR ANNUAL **GROUND HOG SUPPER**

@

Zion Lutheran Church - Lahoma

Sat - Feb 7, 2026

5:30 - 7:00 pm

★ **Fresh Whole Hog Sausage** ★

Scalloped Potatoes

Green Beans

Sauerkraut

Rolls

Cranberry Sauce

And of course,

★ **HOMEMADE DESSERTS!** ★

Everyone
Welcome!

By
Donation

Dine in or carryout available - Call 580-796-2243



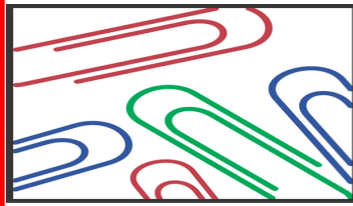
**ST PAUL'S EVANGELICAL
LUTHERAN CHURCH**

1626 E. Broadway Ave.
Enid, OK. 73701

Phone: 580-234-6646
E-mail: office@stpaulsenid.com

The Mission at St. Paul's Lutheran Church is:

*Preach and Teach to ALL,
Comfort and Support those in need!*



FROM THE CHURCH OFFICE

OFFICE HOURS

The Church/School Office hours are from 7:30 AM — 3:30 PM. If you call prior to or after these hours, please leave a message. If it is an emergency please contact Pastor Jonathan Meyer, at (281) 785-5396, or your elder (see page 3). Thank you!

Thank You!



Thank
You

Members of St. Paul's,

Thank you very much for the classroom and school Christmas gifts, these items will be put to good use. We also appreciate your financial support and prayers. Our students, families, and staff are truly blessed by your generosity!

In Christ's Service,
Staff of St. Paul's Lutheran
School


With Sympathy

Mona Jean Webb passed away on January 4, 2026. Her funeral was held here at St. Paul's Lutheran Church with Rev. Meyer officiating. Please keep the family and friends of Mona in your prayers.


Love
One Another

